



## **Welcome to #WCETWebcast**

*Sept. 27, 2017*

- *The webcast will begin shortly.*
- *There is no audio being broadcast at this time.*
- *An archive of this webcast will be available on the WCET website next week.*

<https://youtu.be/zj0Da7qqHZs>

# How to Reach Out and Inform Key Stakeholders

## *Key Stakeholders Part 3*

*September 27, 2017*



# Welcome!

- *Use the question box for questions and information exchange.*
- *Archive, PowerPoint, and Resources available next week.*
- *PowerPoint can be downloaded in the handouts pane.*
- *Follow the Twitter feed: #WCETwebcast.*

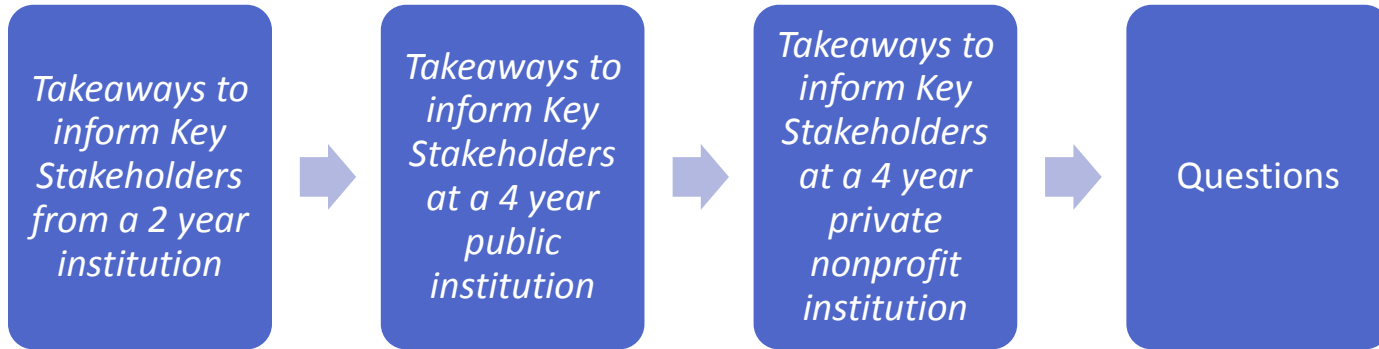


Megan Raymond  
Assistant Director,  
Programs & Sponsorship  
WCET

[mraymond@wiche.edu](mailto:mraymond@wiche.edu)

@meraymond

# Overview



# Questions from the Audience

- *If you have a question during the presentation, please add your questions to the question box.*
- *We will monitor the question box and have time for Q&A at the end of each section.*



# Moderator

## **Cheryl Dowd**

*Director, State Authorization  
Network, SAN*

*WCET*



# Presenters

Hilary Burgess –  
Jackson  
*Compliance  
Coordinator  
Sinclair Community  
College*



Cory Stokes  
*Digital Learning  
Officer  
University of Utah*



Joy Verner  
*Compliance  
Coordinator  
Pennsylvania  
College of Health  
Sciences*



Presenter

## **Hilary Burgess-Jackson**

*Compliance Coordinator*

*Sinclair Community College*





# 5 Key Points

- 1. Identify
- 2. Decision Makers
- 3. Start with One
- 4. Use Your Resources
- 5. Find Other Reasons for Communication



Image: pixabay.com/en/hand-fingers-finger-palm-five-1035051/

# 1. Identify

What needs to be  
done

+

Who will be  
impacted

=

Communication  
with a lot of  
people

$$x^2 - 5x + 6 = 0 \quad (1)$$

$$x_1 = \frac{5 + \sqrt{25 - 4 \times 6}}{2} = 3 \quad (2)$$

$$x_2 = \frac{5 - \sqrt{25 - 4 \times 6}}{2} = 2 \quad (3)$$

and so we have solved equation 1

## 2. Decision Makers

Ask: Who is going to be making the decision on a particular issue? Then look backward to determine all others involved before moving it forward.



Image: [Emu \(Dromaius novaehollandiae\) looking backwards at Auckland Zoo](#) by [Avenue](#) by CC 3.0 SA

### 3. Start with one

Get someone on your side to help open the door; sometimes all it takes is one key person/meeting to get your name out there



## 4. Use your resources

- Use what your department owns:
  - at SCC, State Authorization is housed in eLearning, so I have the “in” on working with academic coaches and instructional designers
  - use this to help craft solutions you can present to stakeholders



## 5. Use other reasons for communication

- Ask: Are there other reasons to contact a department that tie in with State Authorization?
  - Ex: Review webpages for consistent information, and use this to bring department figures together to understand state authorization



Image: [pixabay.com/en/question-mark-question-help-2314111/](https://pixabay.com/en/question-mark-question-help-2314111/)

# Presenter

## **Cory Stokes**

*Digital Learning Officer*

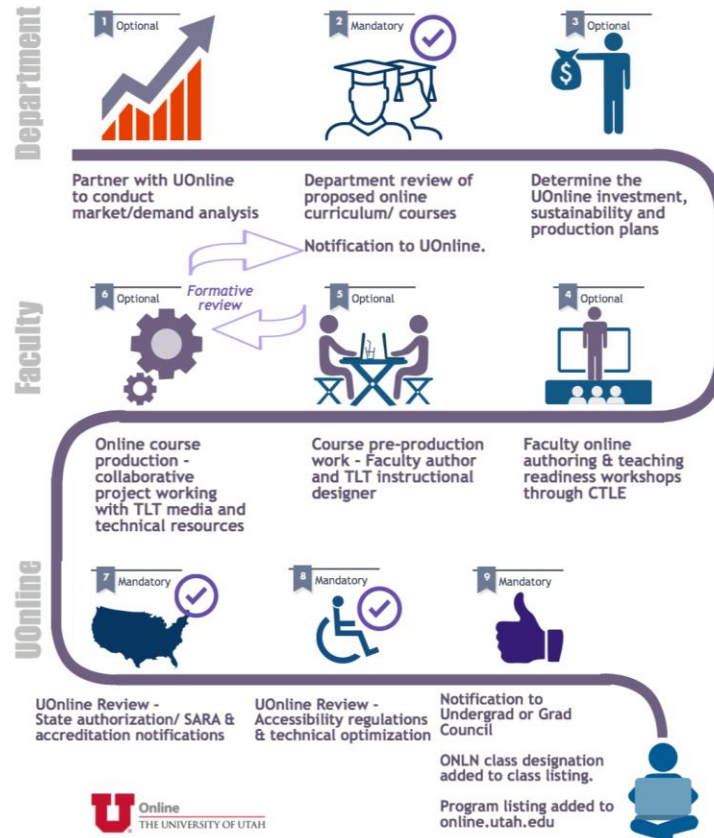
*University of Utah*



- Connect to standardized online development and accreditation processes
- Frame it as risk management
- Make it a proactive *campus service* with a dedicated position
- Include the course development team
- Incorporate State Auth info into curriculum management data

# Creating Online Offerings

Partnering with UOnline





# Presenter

## **Joy Verner**

*Compliance Coordinator*

*Pennsylvania College of Health  
Sciences*



***THE JOY OF  
STATE  
AUTHORIZATION!***

# ***THE "TIONS" OF AUTHORIZATION***

## ***LOCATION, LOCATION***

- × Programs
- × Activities
- × People
- × Drama
- × Glitches
- × Get out!

## ***DOCUMENTATION***

- × Outreach
- × Conversations
- × Emails
- × Letters
- × Virtual content
- × Rationale

## ***CELEBRATION & EDUCATION***

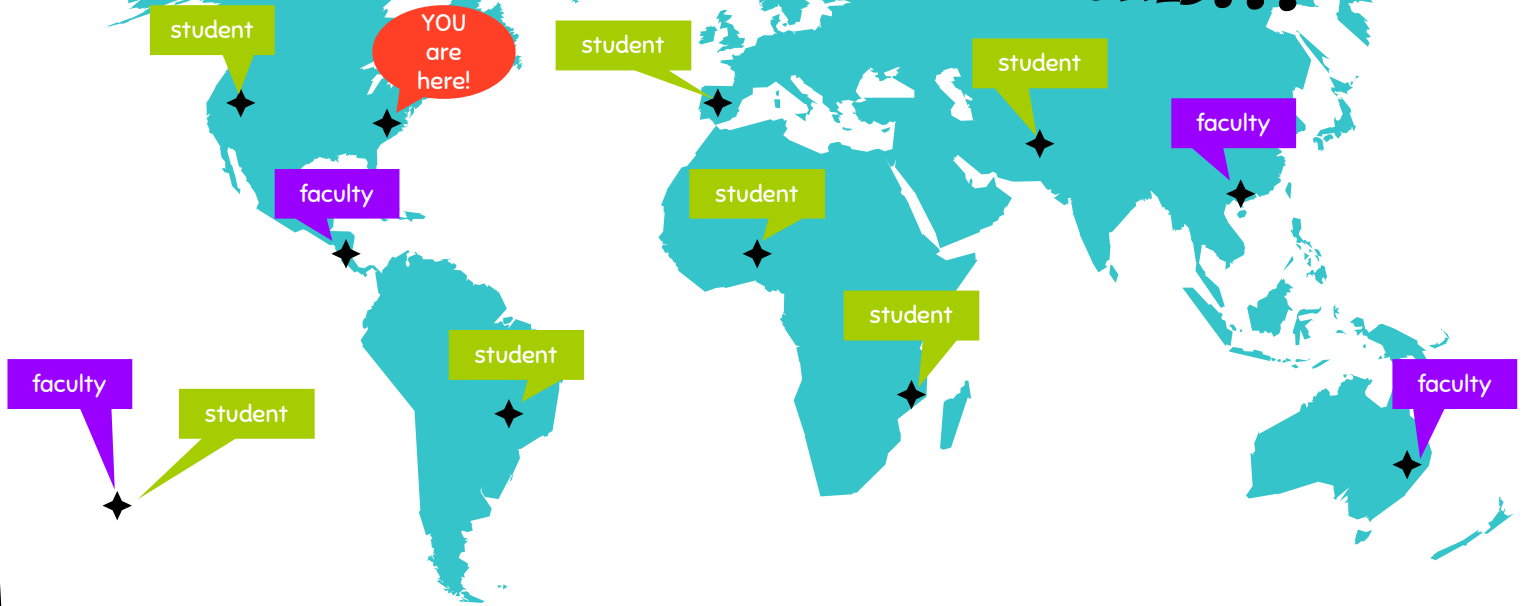
- × Remember Day One
- × Internet & Outlook
- × Professional Groups
- × SARA smile!
- × It still depends
- × Educate, Elevate & Energize

# ***WHERE'S WALDO?!***



CENSUS OF STUDENTS, FACULTY, AGENTS . . . and even billboards!

# ***YOUR EDUCATIONAL FOOTPRINT IN THE WORLD...***



The background is a dark purple with a fine, light-colored dot pattern. Scattered across the top are several colorful stars in shades of orange, cyan, green, and yellow. On the right side, there is a white illustration of a planet with a ring and a small rocket ship with a flame trail.

**ALWAYS**

**DOCUMENT!**

*GOOD FAITH EFFORT & PEACE OF MIND*

**E-TRAIL!**

**REGULATOR NAMES  
& TITLES!**

**LETTERS!**

**BINDERS!**

**SOURCES!**

**NOTES ON NAPKINS!**

**BLAM!**

**ZOWIE!**



# ***MEMBERSHIP HAS IT'S PRIVILEGES***

“Like the invention of the lightbulb, radio, and air conditioning, the State Authorization Reciprocity Agreement (SARA) was created and became a household name making compliance easier for the institutions who participate in SARA.”

*- WCET SAN Resources*

<https://wcefioniers.org/2017/06/01/state-authorization-resources-updated-and-new/>







**48**  
STATES

**1,600**  
INSTITUTIONS



**2** OTHERS (DC & USVI)



*What does that spell? SUCCESS!*



# ***IT TAKES A VILLAGE TO GET THE JOB DONE!***

This is not a solo gig!  
Search for new colleagues and training opportunities. Stay connected with your compliance network. Find a mentor, be a mentor. Choose Nutella once in awhile, unless you have a nut allergy.  
Inhale, exhale, repeat.





***WHY CAN'T WE  
SEND STUDENTS  
THERE?***

# TEACHABLE MOMENTS

(EVEN WITH SENIOR LEADERS & FACULTY)

**PENNSYLVANIA COLLEGE**  
of HEALTH SCIENCES

## Office of Institutional Research

### Legal Issues in Higher Education Webinar

Join us to learn more about this critical legal issue in higher education: student travel experiences and associated risks. Although the webinar will focus on travel abroad, we plan to utilize the information to assist in creating field experience policy and procedures (for local, regional, national or international sites) and addressing risk management issues associated with these community-based experiences for our students (service-learning projects, internships, experiential class assignments and field trips).

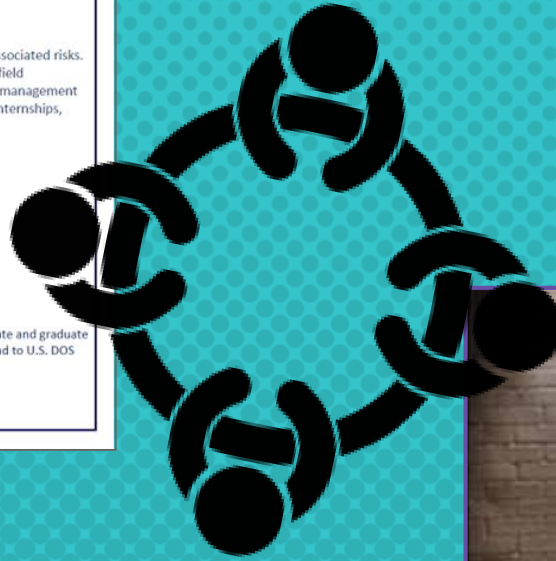
Please pass along this invitation to colleagues that you think may have an interest in this topic.

Questions? Contact [Joy Vemer](#). Thank you!

**WEBINAR DESCRIPTION:**

**Travel Oversight Advisory Committees: Managing Your Institutional Responsibility & Risk**  
Tuesday, May 10th • 2-3:30 pm (ET)

Continued institutional interest and support for a wide variety of international travel experiences for undergraduate and graduate students poses challenges for your institution's capacity to manage risk. From worries about student deaths abroad to U.S. DOS Travel Warnings to CDC Travel Notices, the issues are vast and complicated.



***HOW AM I SUPPOSED  
TO KNOW IF SHE  
MOVED?***





## ***MESSAGING YOUR PEEPS!***

- ❖ Admissions
  - ❖ Registrar
  - ❖ Program Chairs
  - ❖ Faculty Advisors
  - ❖ Human Resources
  - ❖ Student Engagement
  - ❖ Institutional Research
- ... INCLUDING YOUR STUDENTS!***



# **ZOWIE!** LET'S REVIEW KEY TAKEAWAYS **BLAM!**

## Location

Students, Faculty, Sites,  
Agents, Marketing Ads, IT  
Servers.  
Domestic (SARA vs. Non-SARA)  
International (yikes!)

## Education

Yours – Kentucky in Spring!  
Theirs – Chicken Little  
Our Students – raison d'être

## Documentation

**ZOWIE!** You are a SUPERHERO,  
preserving the history of your  
IHE's good faith efforts! Be a  
no-nonsense archivist who  
keeps detailed records. **BLAM!**

## Standing Ovation!

Take a bow wherever you are at this very moment, for being  
diligent in this gatekeeping role! **COMPLIANCE IS NOT FOR THE FAINT  
OF HEART - AND TALK ABOUT WEARING MANY HATS:** *Inventor, Author,  
Air Traffic Controller, Parking Enforcement Officer, Talk Show  
Host, Magician, Caterer. Never a bobblehead.*

## Celebration

Panoramic Perspective  
Reciprocity Rocks!  
Other milestones  
Laughter & Connection

# THANKS!

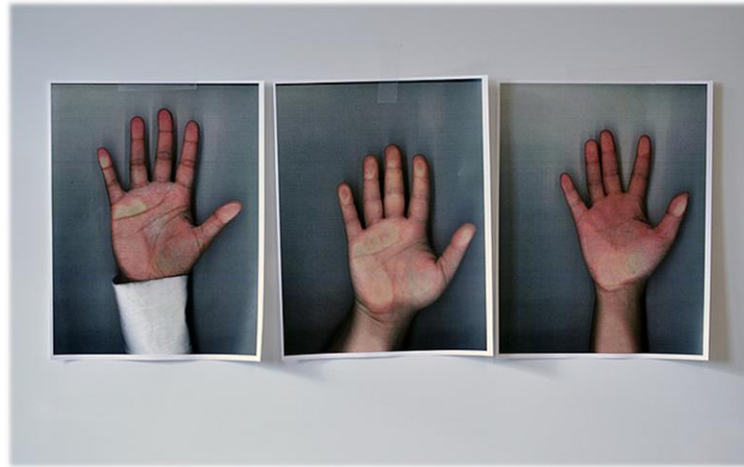


Any questions?

You can find me at [jverner2@pacollege.edu](mailto:jverner2@pacollege.edu)



# Questions from the Audience



# Contact Information

- **Cheryl Dowd**, Director, WCET/SAN - [cdowd@wiche.edu](mailto:cdowd@wiche.edu)
- **Marianne Boeke**, Senior Associate, NCHEMS - [Marianne@nchems.org](mailto:Marianne@nchems.org)
- **Terri Taylor-Straut** – Senior Research Analyst, WCET/SAN – [tstraute@wiche.edu](mailto:tstraute@wiche.edu)
- **Hilary Burgess- Jackson** – Compliance Coordinator, Sinclair College - [hilary.burgess-jacks@sinclair.edu](mailto:hilary.burgess-jacks@sinclair.edu)
- **Cory Stokes** - Associate Dean of Undergraduate Studies, University of Utah – [cory.stokes@Utah.edu](mailto:cory.stokes@Utah.edu)
- **Joy Verner** – Compliance Coordinator, Pennsylvania College of Health Sciences - [jverner2@PACollege.EDU](mailto:jverner2@PACollege.EDU)



## **WCET/ State Authorization Network**

Providing research, training, and collaboration to efficiently manage regulatory compliance of interstate activities in higher education.



<http://wcet.wiche.edu/initiatives/state-authorization-network>

## **WCET State Authorization Webpage**

<http://wcet.wiche.edu/focus-areas/policy-and-regulation/state-authorization>

## **WCET *Frontiers* Blog**

<https://wcetblog.wordpress.com/>

# Learn More and Stay Connected

## **WCET Annual Meeting**

**October 25-27 (SAN Coordinator Mtg. October 24)**

**Precon: WCET ISSUE Session - State Auth. Oct 25 9am-12pm**

**Denver, CO**

**[Register Here!](#)**

# Learn More and Stay Connected

Focus Areas ▾

Initiatives ▾

Events ▾

Get Involved ▾

Visit WCET's New Website to learn about our Focus Areas, Initiatives, Events, Membership and Sponsorship: <http://wcet.wiche.edu/>

Join WCET: learn more about the benefits of joining our community: <http://wcet.wiche.edu/join-wcet>

# Additional Information and Resources

Access to the resources discussed during this webcast, including the archive, will be available next week.

<http://wcet.wiche.edu/connect/webcasts>



# Thank you Supporting Members for your commitment to WCET and e-Learning

- *Colorado State University*
- *Cooley LLP*
- *Lone Star College System*
- *Michigan State University*
- *University of Missouri - Columbia/Mizzou Online*
- *University of North Texas*



# Thank you WCET Annual Sponsors

- *Barnes & Noble LoudCloud*
- *Blackboard*
- *MaxKnowledge*
- *Pearson Learning Solutions*
- *Realizeit*
- *Wiley Education Services*
- *VitalSource*
- *Ed Map*
- *Carolina Distance Learning*
- *Ilos videos*
- *Learning Objects*
- *Soomo Learning*
- *Drexel University*
- *Schoology*
- *MediaSite*

Learn about Sponsorship Opportunities: <http://wcet.wiche.edu/get-involved/sponsorship>