

WELCOME TO #WCETWEBCAST

November 28, 2018

The webcast will begin shortly.

There is no audio being broadcast at this time.

An archive of this webcast will be available on the SAN website next week.

Youtube link: <https://youtu.be/4OijuxjwBpE>





SANSATIONAL AWARD WINNERS PART 1 LICENSURE PROGRAMS

November 28, 2018



WELCOME!

Use the question box for questions and information exchange.

Archive, PowerPoint, and Resources will be available next week.

PowerPoint can be downloaded in the handouts pane.

Follow the Twitter feed: #WCETWebcast.



wcet

SAN



QUESTIONS FROM THE AUDIENCE

If you have a question during the presentation, please add your questions to the question box.

We will monitor the question box and have time for Q&A at the end of the presentation.





MODERATOR

Name: Cheryl Dowd

Title: Director, State Authorization Network (SAN)

Org: WCET

Name: Dan Silverman

Title: Assistant Director, State Authorization Network (SAN)

Org: WCET

PRESENTERS

University of Phoenix



Bridget Beville
Sr. Corporate Counsel

Mount Saint Mary's University



Cairesse Grimes
Office of the Provost Coordinator



Michele Starkey
Associate Provost &
Accreditation Liaison Officer



University of Phoenix®

LICENSURE DISCLOSURES

IT TAKES A VILLAGE....

- Office of the Provost
 - Academic Deans/Program Deans
 - Regulatory Deans/Compliance Director
 - Student Services
- Legal
 - Regulatory Attorneys
- Marketing
 - Compliance Manager
 - Website Administrator



...AND A LOT OF WORK!

- Program Purpose Statements for each licensure program.
- State Licensure Requirement webpages for each licensure program.
- Programmatic Accreditation and Regulatory Compliance Deans for each School or College with a licensure program.
- Specialized enrollment, academic counseling, and field placement teams for each licensure program.
- Collaboration with University Legal Services Regulatory Practice Group for all licensure programs.



PROGRAM PURPOSE STATEMENTS

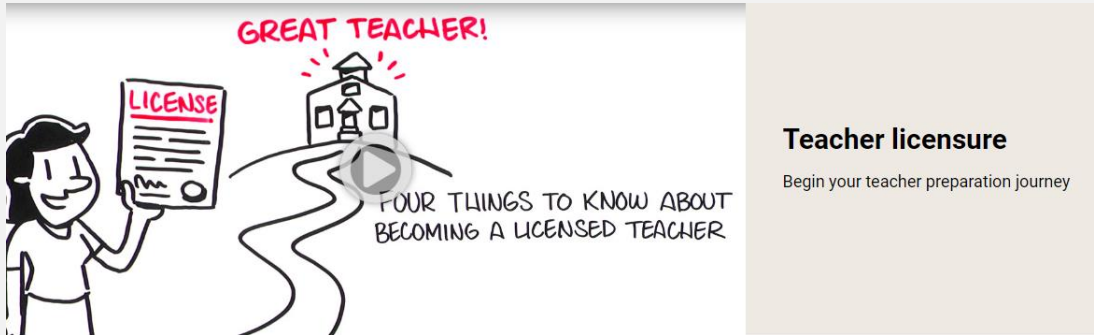
The PPS is designed to inform students of several items:

1. Enrollment Eligibility – what credential, if any, the student must have to enroll;
2. Educational Preparation – what the student will learn in the program;
3. Field Experience Requirements – what the student must do in addition to didactic coursework; and
4. Licensure/Exam Preparation – what type of professional license or certification the student is prepared to apply for upon completion of their program.

The Bachelor of Science in Education/Elementary Education is an undergraduate degree program intended to prepare students with no prior teaching experience for initial teacher licensure. The program is designed for students who want to become elementary school teachers and includes a clinical component requiring field experiences and student teaching above and beyond program coursework. As licensure requirements may vary by state, it is the student's responsibility to ascertain and meet licensure requirements in any state in which the student desires to practice and to contact the applicable state educator licensure agency to verify current requirements to become a licensed teacher. There may be additional qualifications and/or disqualifications applicable in order to work as a teacher with any local, state or federal entity.



STATE LICENSURE PAGES



<https://www.phoenix.edu/colleges/college-of-education/teacher-licensure.html>

State Licensure Requirements

Review the licensure requirements listed under your state as you prepare for your teacher preparation journey.

Alabama	⊕	Nevada	⊕
Alaska	⊕	New Hampshire	⊕
Arizona	⊕	New Jersey	⊕
California	⊕	New Mexico	⊕
Colorado	⊕	North Carolina	⊕
Delaware	⊕	North Dakota	⊕
District of Columbia	⊕	Oklahoma	⊕
Florida	⊕	Oregon	⊕
Georgia	⊕	Pennsylvania	⊕
Guam	⊕	Puerto Rico	⊕

<https://www.phoenix.edu/colleges/college-of-education/teacher-licensure/state-requirements.html>



COMPLIANCE STAFF

- Regulatory Deans
 - Monitor external requirements for programmatic accreditation and state board requirements.
 - Monitor all regulatory and legislative changes that impact the respective field.
- Specialized Teams
 - Learn the program requirements in depth.
 - Must be certified (in house) before speaking to students.
 - Serve in multiple areas – Enrollment, Academic Counseling, Policy Analysis, Field Placement.
- Legal
 - Advise on regulatory requirements.
 - Review disclosure language.



COMMUNICATING TO STUDENTS

- Externally
 - Website – Links in multiple places
 - College Homepage
 - <https://www.phoenix.edu/colleges/college-of-education.html>
 - Program Homepage
 - <https://www.phoenix.edu/programs/degree-programs/education/bachelors/bsed-e.html>
 - State Licensure Pages
 - <https://www.phoenix.edu/colleges/college-of-education/teacher-licensure.html>
 - <https://www.phoenix.edu/colleges/college-of-education/teacher-licensure/state-requirements.html>
 - Academic Catalog – PPS and links to state licensure pages
 - <https://www.phoenix.edu/programs/degree-programs/academic-catalog.html>
 - Marketing Collateral – ALL student facing materials
 - Emails; social media; direct mail; handouts
- Internally
 - Student Handbook
 - Ecampus
 - Academic Counselors
 - Field Placement Team



CONTACT INFORMATION

Bridget Beville

bridget.beville@phoenix.edu

602-557-1823 office

480-273-0455 mobile



Bridget Beville is a regulatory lawyer with a focus on higher education law and policy. She has spent the last thirteen years at the University of Phoenix, starting as Associate Faculty in Law & Ethics and moving into roles in both University Legal Services and Government Affairs. In her current role, she serves as the University's primary legal advisor on SARA policies and procedures, state authorization and distance education, and licensure programs. Bridget worked with a team of cross functional leaders to implement SARA in Arizona, including formation of the Arizona SARA Council. She has also worked with state higher education regulatory authorities across the country and is familiar with local and online regulatory schematics in several states. Before working for the University, Bridget practiced law in Texas for eight years, including stints at both the Hidalgo County District Attorney's Office and the El Paso County Attorney's Office, and was appointed an Associate Municipal Judge for the City of El Paso. She holds an undergraduate degree in Spanish from the University of Illinois at Urbana-Champaign and a law degree from St. Mary's University in San Antonio, Texas.



ABOUT THE MOUNT

- Catholic university in Los Angeles, CA
- Liberal Arts institution
- Primarily for women
- Around 3,000 students total
- 9 professional licensure track programs (1 online)



AGENDA

- Background
- Visibility
- Ease of Use
- Ease of Understanding



BACKGROUND

- Created Compliance Team
- Developed Policy for Professional Licensure Disclosures
 - Centralized approval
 - Required components
 - Annual review
 - Placement
- ALL professional licensure programs, whether on-ground or online, are subject to policy
- Still in the process of conducting state-specific research



VISIBILITY

- **For Prospective Students**

- Website
- Marketing material
- Catalog

- **Applicants**

- Website
- Applications
- Admittance letters
- Enrollment agreements

- **Current Students**

- Website
- Internal portal
- Advising sessions
- Program specific handbook
- Catalog



EASE OF USE – PROSPECTIVE STUDENTS

- **Website:** *About* → *State Authorization & Professional Licensure*

State Authorization & Professional Licensure

Compliance at the Mount

[Online](#) > [State Authorization & Professional Licensure](#)

State Authorization

Mount Saint Mary's University (MSMU) is physically located in the state of California. State authorization is what allows Mount Saint Mary's University and other institutions to conduct certain educational activities outside of their home state. Every state has its own regulations that we must follow in order to conduct educational activities in that state.

Professional Licensure

There are certain careers or fields that require a professional license. Licensure is the act of granting a license to practice a profession (Merriam-Webster, 2018). Licensure requirements to be licensed in a given field may vary by state. MSMU's professional licensure programs are designed to prepare students for a license in the state of California. For students who wish to practice in a state other than California, you may or may not have additional requirements you must complete prior to applying for your license in your state of choice. Please visit the [Disclosure](#) section for more program specific information and/or contact information.



EASE OF USE – APPLICANTS

- ***Online Application***

Please note the Counseling Psychology program is designed to prepare students for a Marriage and Family Therapy (MFT) license in the state of California. For students who wish to practice in a state other than California, you may or may not have additional requirements you must complete prior to applying for your license. Please contact the Counseling Psychology program at gradpsy@msmu.edu to discuss if you will need to satisfy additional requirements.

- Verification (Please check the box below)

I verify that I understand the license disclosure above.

This field is required.


Please complete the missing fields.

CONTINUE



EASE OF USE – CURRENT STUDENTS

- Advising Sessions

 **Mount Saint Mary's University**
LOS ANGELES

**Out of State Professional Licensure/Certification
Acknowledgment Form**

I, _____ have reviewed with _____
(First and last name of student) (First and last name of Advisor)

the professional licensure requirements for a _____
(Name of license/certification)

license/certification in the state of _____ and understand that I may
(Name of state(s))

need to fulfill additional requirements in order to obtain a license in the state(s) listed.

Student Acknowledgment*	Advisor Acknowledgment
Print Names: _____	_____
Signatures: _____	_____
Student ID: _____	Meeting Date: _____

*MSMU strongly recommends students to also seek current information at the state professional licensing website as regulations do change.

EASE OF UNDERSTANDING

- **General Disclosure Statement**

Mount Saint Mary's University professional licensure programs are designed to prepare students for a license in the state of California. For students who wish to practice in a state other than California, you may or may not have additional requirements you must complete prior to applying for your license. More program specific information and/or contact information can be found on the desired program's webpages.

[Associate Degree in Nursing \(ADN\)](#)

[Bachelor of Science in Nursing \(BSN\)](#)

[Master of Science in Nursing, Adult-Gerontology Clinical Nurse Specialist](#)

[Doctor of Physical Therapy \(DPT\)](#)

[Marriage and Family Therapist \(MFT\) or Licensed Professional Clinical Counselor \(LPCC\)](#)

[California Preliminary or Clear Teaching Credential](#)

[Bachelor of Science in Business Administration, Accounting](#)



EASE OF UNDERSTANDING

- **Program specific disclosures**

- **Nursing**

The Bachelor's Degree in Nursing meets the standards for and has been approved by the [California Board of Registered Nursing](#), leading to the California Registered Nurse (RN) license. Mount Saint Mary's is in the process of researching program professional licensure standards in other states.

- **Psychology**

The Marriage & Family Therapist (MFT) and Licensed Professional Clinical Counselor (LPCC) programs meet the standards and have been approved by the [California Board of Behavioral Science](#), leading to an MFT or LPCC counselor license in California. Mount Saint Mary's is in the process of researching program professional licensure standards in other states.





Mount Saint Mary's University
LOS ANGELES

Policy for Professional Licensure Program Disclosures

All professional licensure programs, whether offered on-ground or online, must create and distribute disclosure statements regarding whether the program does or does not lead to a professional license/certificate in each of the 50 United States and U.S. Territories. It is the department's responsibility to conduct their own research to obtain this information, to write disclosure statements, and update them annually, by October 1st.

[Policy Document](#)



THANK YOU



Michele A. Starkey, EdD
Associate Provost & Accreditation Liaison Officer
Mount Saint Mary's University
310.954.4086 | 213.477.2648
mstarkey@msmu.edu

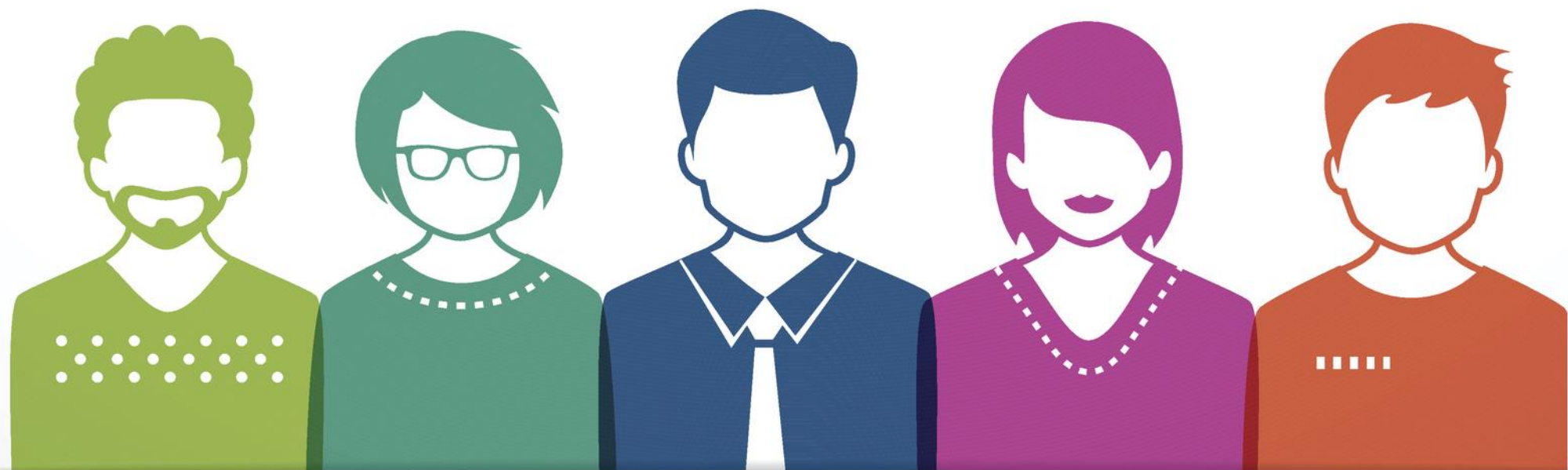


Cairesse Grimes
Office of the Provost Coordinator
Mount Saint Mary's University
213.477.2963
cgrimes@msmu.edu





QUESTIONS FROM THE AUDIENCE



CONTACT INFORMATION

Presenter contact information:

Bridget Beville, Sr. Corporate Counsel; bridget.beville@phoenix.edu

Cairesse Grimes, Office of the Provost Coordinator; cgrimes@msmu.edu

Michele Starkey, Association Provost & Accreditation Liaison Officer; mstarkey@msmu.edu

LEARN MORE AND STAY CONNECTED

Visit WCET's website to learn about our
Focus Areas, Initiatives, Events,
Membership and Sponsorship:

<http://wcet.wiche.edu/>

Join WCET: learn more about the benefits
of joining our national community:

<http://wcet.wiche.edu/join-wcet>

Visit the SAN website to learn more
about our topic areas and research!

<http://wcetSAN.wiche.edu>

Join SAN: learn more about benefits,
services and events:

<http://wcetSAN.wiche.edu/membership>

Focus Areas ▾

Initiatives ▾

Events ▾

Get Involved ▾



LEARN MORE AND STAY CONNECTED

WCET/SAN Basics Workshop

March 6 -7, 2019

Arlington, VA (Wash. DC Metro Area)

UVA Darden Sands Family Ground Center

Hotel: Key Bridge Marriott

[Register now!](#)



ADDITIONAL INFORMATION AND RESOURCES

Access to the resources discussed during this webcast, including the archive, will be available next week for SAN members on the SAN Website.

[Resources: Past Webinars](#)

THANK YOU SUPPORTING
MEMBERS FOR YOUR
COMMITMENT TO WCET
AND E-LEARNING

*Colorado State
University*

Cooley LLP

*Lone Star College
System*

*Michigan State
University*

*University of
Missouri -
Columbia/Mizzou
Online*

*University of North
Texas*



THANK YOU WCET ANNUAL SPONSORS

WILEY

EDUCATION SERVICES



BARNES & NOBLE
education

LoudCloud



Pearson

THE CHRONICLE
of Higher Education®

Blackboard

LEARN

VitalSource™

ED MAP

TOP HAT



FlatWorld

intellus
LEARNING

LEARNING
OBJECTS
A Cengage Company

proctorio



Drexel
UNIVERSITY

@-LITERATE